



**SALAMANDER**  
DESIGNS

Furniture Shaped By Your Needs®

**COLLABORATION FURNITURE**  
**PRECONFIGURED SOLUTIONS**



## 2 BAY DEEP PROFILE CABINET

**D3/323B/**

This robust, large-capacity cabinet system houses all electronics, including integrated support for AV and IT systems. Freestanding and fully-integrated, credenza is perfect for retrofit installations, allowing for quick and efficient installation without involving additional tradespeople to install electrical wiring or reinforce walls.

Available in a variety of styles.



**DYO**  
DESIGN YOUR OWN

See our **full-line catalog** for more customizable credenzas or visit [SalamanderDesigns.com/Commercial](http://SalamanderDesigns.com/Commercial)



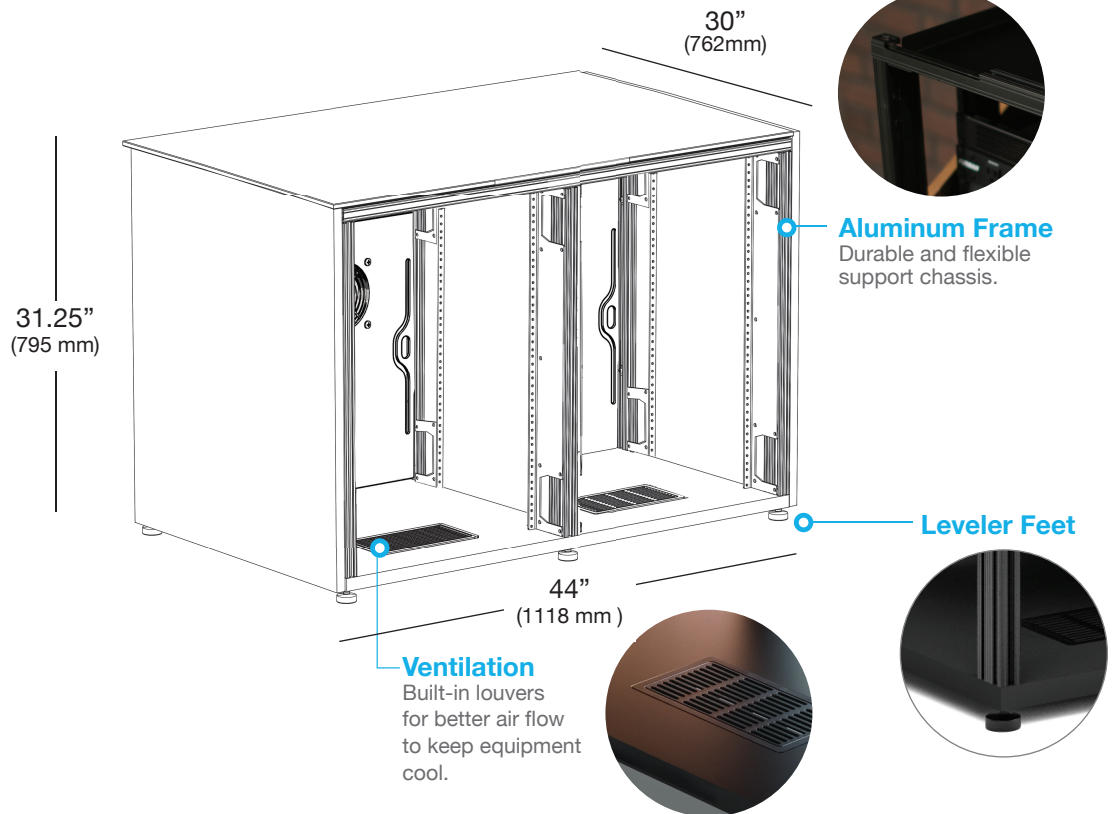


# 2 BAY, DEEP PROFILE CABINET

COLLABORATION FURNITURE

D3/323B/

PRECONFIGURED SOLUTIONS

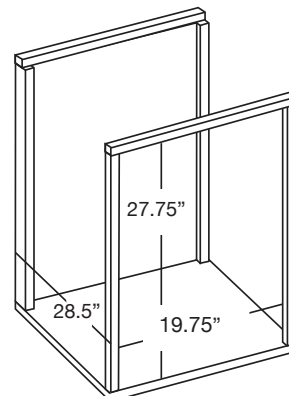


## \*CREDENZA INCLUDES:

1. (8) 15-U Rack Rails
2. (1) Active Cooling Rear Panel
3. (1) Removable Rear Panels
4. (4) Lacing Bars

## Typical interior bay dimensions:

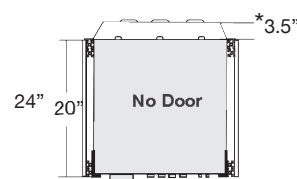
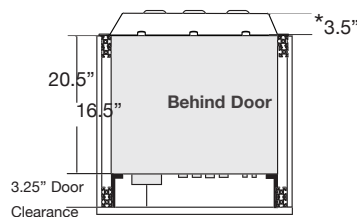
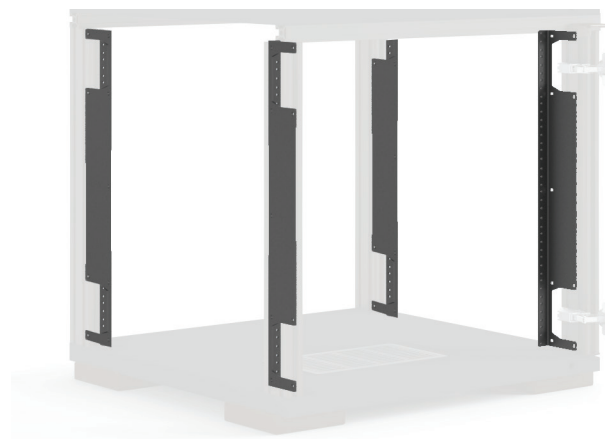
19.75"W (502 mm) x 27.75"H (705 mm)  
x 28.5"D (724mm)





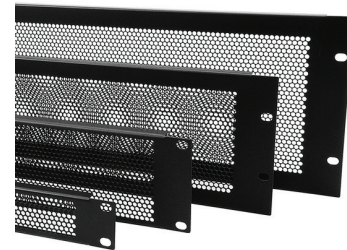
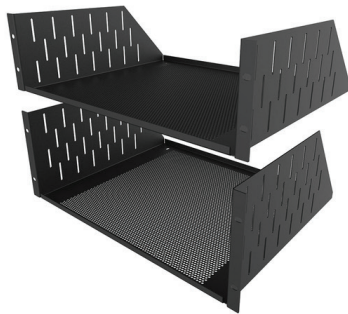
## 15-U RACK RAILS

- Frame-Mounted, 15-U Rack Rails are affixed to cabinet's aluminum frame
- Rails are compatible with all industry standard 19" components and accessories
- Wire manager, lacing bars included (2)
- Hole pattern is a standard 19 EIA rack mount pattern allowing for mounting of equipment with attachment holes either wide or universally spaced.
- Threaded for 10-32 screws
- Black powder coated steel





## ADD ON ACCESSORIES



### Vented Shelves

RM/VS2U	Vented Shelf, 2U - 14"D
RM/VS3U	Vented Shelf, 3U - 14"D
RM/VS4U	Vented Shelf, 4U - 14"D

- Mounts to Pull-Out Rack Cartridge and any 19" standard rack
- 19" EIA standard rack mount, 14" deep, vented shelf
- Black powder coated steel.

### Face Plates

RM/VFP1U	Vented Face Plate, 1U
RM/VFP2U	Vented Face Plate, 2U
RM/VFP3U	Vented Face Plate, 3U
RM/VFP4U	Vented Face Plate, 4U

- Mounts to Pull-Out Rack Cartridge and any 19" standard rack
- Black powder coated steel
- Perforated 16ga steel for component air flow (allows 62% free air flow)



### Wire Lacing Bars for Cartridge

RM/LB2	Pull-Out Rack Cartridge Lacing Bar, Set of 2
--------	--

- Mounts to Rack Cartridge and any 19" standard rack
- Infinitely adjustable wire management
- Includes one velcro wrap strap
- Black powder coated steel





## COOLING & ACCESS

### Active Cooling Rear Panel

- Thermostatically controlled cooling system turns On at approx 80° F, maximum speed is reached at 95° F
- Automatic, low-noise cooling system with 22 dBA, quad 80 mm exhaust fans
- Air Flow: 26 CFM
- Exhaust Direction: Rearward
- Power Consumption: 1W in standby mode; 4 W in mid speed 8-10 W in full speed
- Thermistor: Remote with 20" lead
- Input: 100-240V / 50Hz-60Hz. International power plug available (#400-230 and 400-235)



### Pinch-Out Rear Panels (1 included)

- Permit fast, easy access to components and wiring.





# 2 BAY, DEEP PROFILE CABINET

COLLABORATION FURNITURE

D3/323B/

PRECONFIGURED SOLUTIONS

## STYLES

We select the finest materials and finishes. Choose from sleek, hand-polished, high-gloss finishes to richly textured real wood fronts or a contemporary beveled edge style with a mix of materials. **If you are looking for something special please contact us to discuss custom options.**



### MILAN / WHITE

White, 3-D Diamond Pattern  
Doors with 1/2" (12mm) White,  
Solid Surface

D3/323B/ML/WH/WH



### MILAN / BLACK

White, 3-D Diamond Pattern  
Doors with 1/2" (12mm) Black,  
Solid Surface

D3/323B/ML/WH/BK



### MIAMI / BLACK

Gloss Warm White Door,  
Doors with 1/2" (12mm) Black,  
Solid Surface

D3/323B/MM/GW



### MIAMI / WHITE

Gloss Warm White Door,  
Doors with 1/2" (12mm) White  
Solid Surface

D3/323B/MM/GW/WH



### DENVER - OAK

Natural Oak, Bark-Textured  
Doors with 1/2" (12mm) Black,  
Solid Surface

D3/323B/DV/NO



### DENVER - WALNUT

Medium Walnut, Bark-Textured  
Doors with 1/2" (12mm) Black,  
Solid Surface

D3/323B/DV/MW



### CHICAGO

Black Oak, Grass-Textured  
Doors with 1/2" (12mm) Black,  
Solid Surface

D3/323B/CH/BO



### OSLO

Black Oak Sides, Black Glass  
Doors with 1/2" (12mm) Black,  
Solid Surface

D3/323B/OS/BG



### ZURICH

Linear Texture - Opium Brown  
Doors with 1/2" (12mm) Black,  
Solid Surface

D3/323B/ZU/OB



### BERLIN

Wenge, Wave-Texture  
Doors with 1/2" (12mm) Black,  
Solid Surface

D3/323B/BL/WE