

BT7781

GOOGLE CHROMECAST® MOUNT

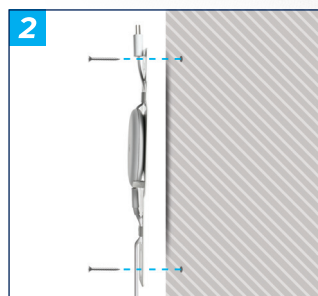
The BT7781 is specifically designed to securely mount the latest Google Chromecast to the back of a TV screen or the wall behind it. This mount is ideal for hotel room installations, offering easy installation and integrated shields on the plate to prevent tampering. Please note that an HDMI extender and fixings may be required for installation but are not included with the product. We recommend contacting B-Tech to confirm compatibility with your specific Chromecast generation before placing an order.

SPECIFICATIONS

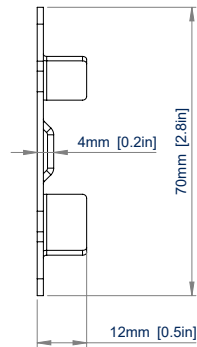
Designed for use with	Google Chromecast®
Dimensions	W: 70mm H: 230mm D: 12mm
VESA® compatibility using both fixings	200 x 200 up to 200 x 400
VESA® compatibility using one fixing	All
Colour	White

FEATURES

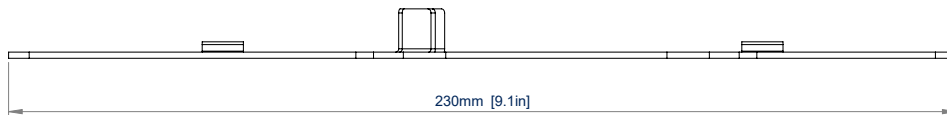
- 1 Mounts the Google Chromecast® to any TV using the screen's VESA fixing patterns
 - 2 Alternatively, can be mounted to the wall behind the screen
 - 3 Can also be mounted underneath the interface arm when wall-mounted
 - 4 May require an additional HDMI extender to reach the desired HDMI input (Not included)
- Integrated cover shields on the plate prevent tampering with the device
 - Ensures a neat and tidy installation while keeping your device secure
 - Simple and straightforward installation
 - Fixing hardware not included



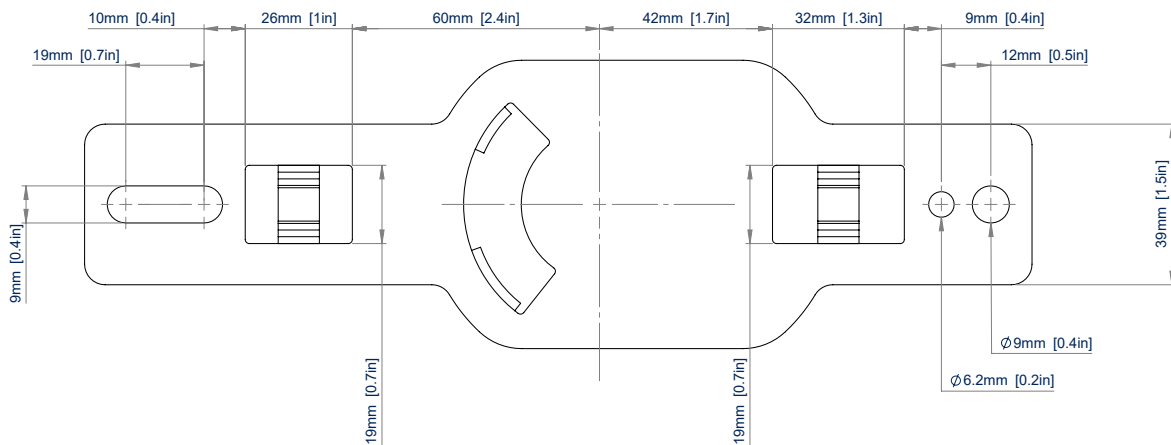
BT7781



TOP VIEW



SIDE VIEW



FRONT VIEW

ORDERING INFORMATION

COLOUR	ORDER REF	EAN
White	BT7781/W	5019318308956

RELATED PRODUCTS

PRODUCT CODE	NAME	DESCRIPTION
BT7881	Chromecast [®] Mount	Designed to mount a Google Chromecast [®] to any TV or appliance
BT7850	Ø50mm Pole	Designed for mounting to the wall, ceiling or floor
BT7841	2-Piece Accessory Collar	Designed for use with Ø50mm poles
BT8390	Horizontal Mounting Rail	For creating System X™ installations

© 2018 B.Tech. AV Mounts Corporation Ltd. All rights reserved.
The information this specification sheet reflects is current technical specifications at the time of printing.
We reserve the right to change the technical or physical specifications without prior notice. The B.Tech. name and the B.Tech. logo are registered trademarks of B.Tech. AV Mounts Corporation Ltd.
B.Tech. is a registered trademark of B.Tech. AV Mounts Corporation Ltd. All other trademarks are the property of their respective owners.
Specification sheet is strictly for reference. All other specifications are subject to change without prior notice.
SS-BT7781-290824