

IDEAL FOR  
CCTV  
INSTALLS

# BT5911

## LARGE DOME SECURITY CAMERA MOUNT FOR Ø38MM POLES

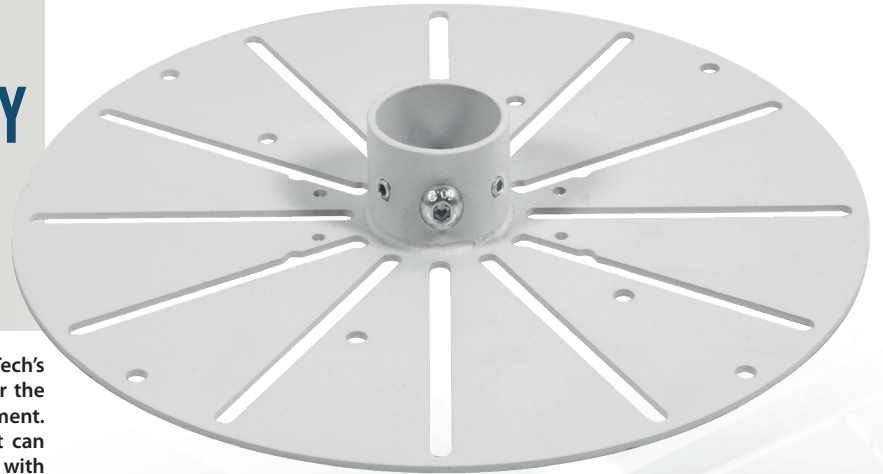
The BT5911 is a CCTV dome camera mount from B-Tech's System V Range; a collection of components designed for the installation of CCTV and other ceiling mounted equipment. Designed for use with BT5935 ø38mm poles, the mount can support large dome cameras up to 5kg and when used with other parts from the System V Range, allows professionals to customise their ceiling mounted security solutions to their specific requirement.

### SPECIFICATION

Maximum load	5kg
Camera fixings dimensions	51mm - 251.5mm
Camera plate diameter	268mm
Colour	White

### FEATURES

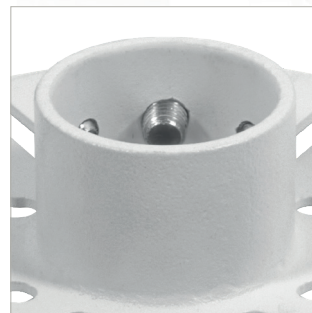
- Mount a large dome CCTV camera to the end of a **BT5935** ø38mm pole
- Carousel suitable for cameras with fixings from 51mm up to 251.5mm apart
- Grub screws allow micro-adjustment of the mount to ensure camera sits level
- Safety bolt ensures pole and camera mount are securely joined
- Integrated cable management allows cables to pass through the centre of the mount
- Create a variety of ceiling mounted CCTV installs using System V's range of components



Attaches directly to **BT5935** ø38mm poles



Multiple mounting points for large, domed CCTV security cameras



Safety bolt ensures pole and camera mount are securely joined



Complete off-the-shelf kits also available (image shows BT5961-FD100)

