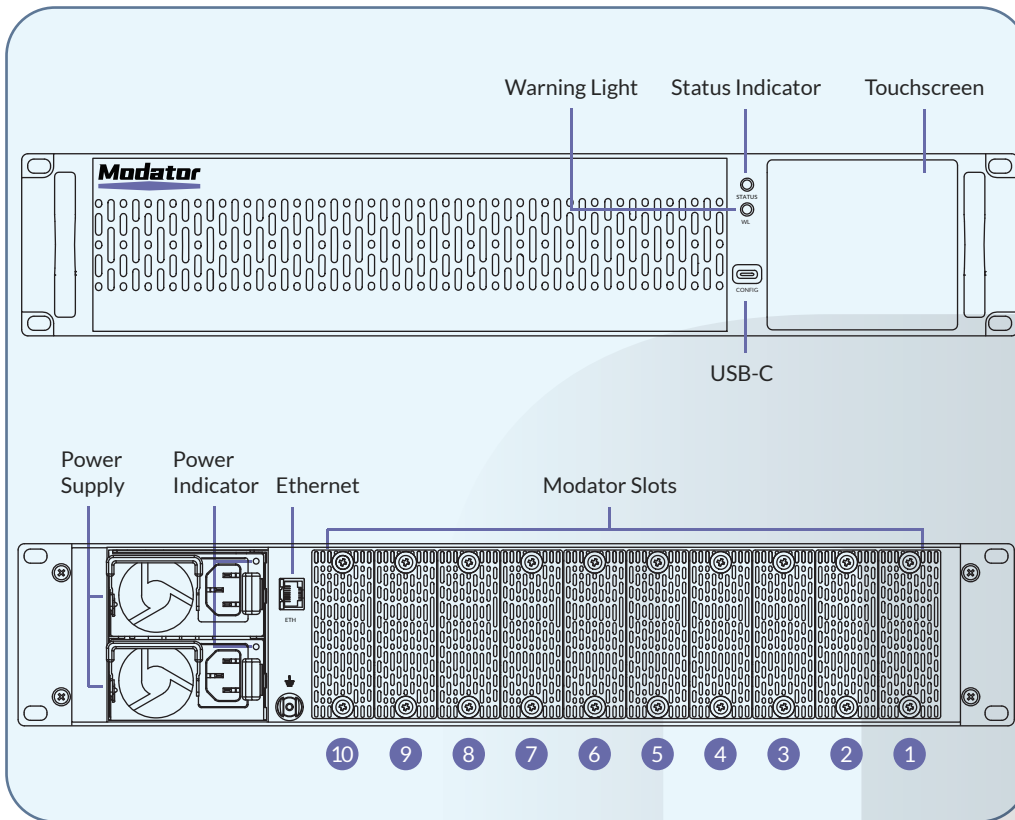


# Modator 2U



The Modator family brings the reliability and low-latency performance of Magewell's standalone encoders and decoders to a high-density, modular, rackmount form factor. The Modator 2U chassis fits standard rack deployments and supports up to 10 Modator modules.

## Interfaces and Indicators



10\* Modator slots supporting hot swap of Magewell modules

1\* RJ45 1000Mbps Ethernet port for configuration

1\* USB Type-C port for configuration

## Physical Specifications

Form factor: 482mm (L) x 275mm (W) x 88 mm (H)

Weight: ≈5.6kg (with 10 blank panels)

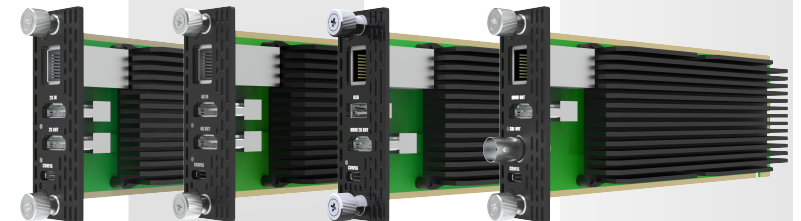
## General Features

- Each installed encoding or decoding module independently provides high-quality conversion
- Dual power supplies and optimized heat dissipation for 24/7 operation
- LED touch screen provides status monitoring of the chassis and modules
- Browser-based web user interface for chassis configuration and status monitoring of the chassis and modules



## Current Modator modules include:

- Pro Convert HDMI Plus Module (NDI® High Bandwidth encoder)
- Pro Convert HDMI 4K Plus Module (NDI® High Bandwidth encoder)
- Pro Convert for NDI® to HDMI Module (multi-format decoder)
- Pro Convert for NDI® to AIO Module (multi-format decoder)



## Specifications

Scan the QR code to get detailed product specifications:



Modator 2U