



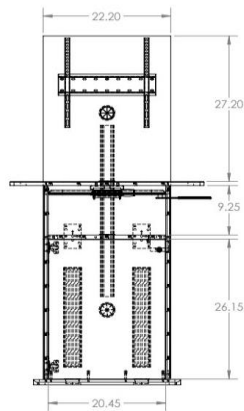
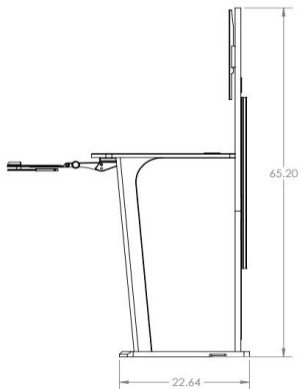
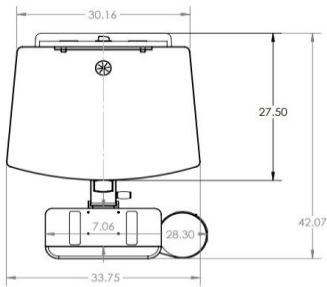
KS90 is an information kiosk engineered for public use. It is a contemporary and sturdy design, made from highly resistant thermowrap finished panels. KS90 is designed with a wide flat top work surface and can house a small PC, keyboard, mouse and printer. Adjustable height keyboard option is available for environment where ADA is required.

Standard Features

- Lock & Key Door
- Push to Open Door Mechanism
- TV Mounting Bracket
- Wide Work Surface
- Wire Management Solutions
- Cable grommets
- Highly resistant thermowrap finish
- Ships assembled

Options

- **KTADA-20** ADA Keyboard & Mouse Tray
- **SF-PB3** Surface Mounted 3-outlet 120V power bar
- **MIC-18** MX418 S/C Microflex Gooseneck Microphone
- **PB 6** Outlet 110V Power Bar
- **PC-PATCH** Power Panel with Surge Protection and USB Port
- **CUB3** Round Cable Well
- **CUB4** Round Cable Well
- **CUB5** Round Cable Well
- **CUB22** Black 3 Module Panel
- **CUBM3** 3 Module Power & Data Panel
- **CUBM4** 4 Module Power & Data Panel
- **CHGQiB** Wireless Charging Station
- **CUSTOM CUTOUT** Cutouts for Electronics or Other Items



Specifications

Model: KS90
Width: 33.4"
Depth: 24.35"
Height: 67.95"

Finishes:



Other finishes are available. Check website.

The information contained in this drawing is the sole property of Audio Visual Furniture International. Any reproduction in part or as a whole without the written permission of Audio Visual Furniture International is prohibited. We can build or modify stock configurations to suit customer specifications. Please contact us to discuss how this service can help meet your needs. Some quantity restrictions may apply. Specification subject to change without notice. Computers, cameras, monitors, etc. are shown to illustrate product usage and are not included unless otherwise noted.