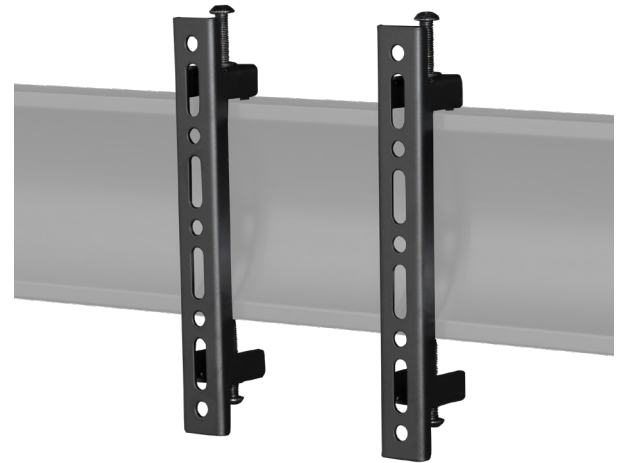


BT8390-VESA200F

SYSTEM X™ INTERFACE ARMS FOR SMALL / MEDIUM SCREENS

Perfect for single-row, multi-screen set-ups, these interface arms are designed to mount small to medium-sized screens in a fixed position along System X horizontal mounting rails. The universal design accommodates a broad range of screens, enabling them to be mounted in both landscape and portrait orientations. With leveling screws on each interface arm, fine-tuning the height after installation is made easy. Additionally, the arms boast a slim 1.88" mounted depth from the wall, ensuring convenient access to cables and connectors.



SPECIFICATIONS

Recommended screen size	up to 47"
Max load	154lbs
VESA® & non-VESA fixing	up to 7.87" ** (vertical dimension)
Depth (wall mounted install)	1.88"

FEATURES

- Ideal for menu boards and other multi-screen installations
- 1** Universal design compatible with most screens
- 2** Includes leveling screws to adjust the screen height
- 3** Safety screws help prevent unauthorized removal of screens
- 4** Simple 'hook-on' installation
- Suitable for landscape or portrait mounting
- Lateral adjustment - position arms anywhere along the length of the rail
- Supplied in pairs
- TÜV certified



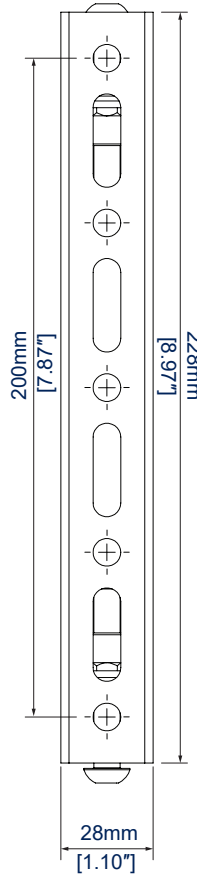
SYSTEM X™

RECOMMENDED MAX SCREEN	MAX LOAD	MAX VESA	POST INSTALL ALIGNMENT	TÜV CERTIFIED	QR CODE
47" 120cm	154lbs	200	← →	TÜVRheinland	

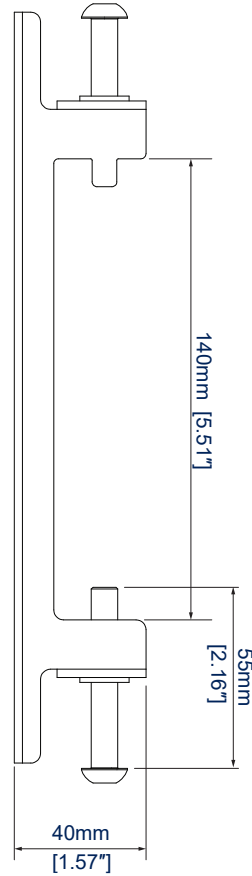


*The VESA specification of the BT8390-VESA200F refers to the vertical dimension only. All System X interface arms can be positioned as far along the rail as necessary.

BT8390-VESA200F



FRONT VIEW



SIDE VIEW

ORDERING INFORMATION

COLOR	ORDER REF	UPC
Black	BT8390-VESA200F/B	811867036046

RELATED PRODUCTS

PRODUCT CODE	NAME	DESCRIPTION
BT8390-WFK1	System X Rail Mounting Bracket	Designed to mount BT8390 Horizontal Rails to a wall or pole
BT8390	System X Horizontal Rails	Mounting rails in multiple lengths designed to support a variety of interface arms
BT8390-VESA400F	System X Fixed Interface Arms	Designed for screens with fixings patterns up to 15.74"
BT8390-VESA200T	System X Interface Arms with Tilt	For screens with fixings up to 7.87" on installations requiring a tilt function

© 2018 B.Tech. AV Mounts Co., Ltd. All rights reserved.
 The information in this specification sheet reflects the current technical specifications at the time of printing.
 B.Tech. AV Mounts Co., Ltd. reserves the right to change the technical specifications without prior notice. The B.Tech. AV Mounts Co., Ltd.
 B.Tech. AV Mounts Co., Ltd. is not responsible for any damage or loss of data caused by improper installation or mounting on unstable structures. Any reproduction or use without permission or modification of any part of this
 specification sheet is strictly prohibited unless prior written permission is granted by B.Tech. AV Mounts Co., Ltd.

SS-V3-BT8390-VESA200F-110424-NA