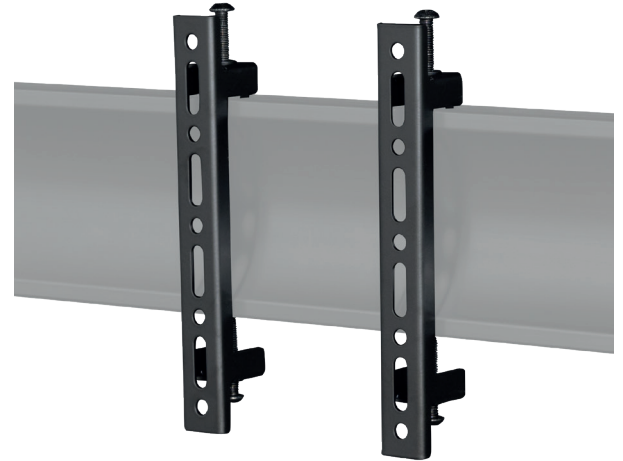


BT8390-VESA200F

SYSTEM X™ INTERFACE ARMS FOR SMALL / MEDIUM SCREENS

Perfect for single-row, multi-screen set-ups, these interface arms are designed to mount small to medium-sized screens in a fixed position along System X horizontal mounting rails. The universal design accommodates a broad range of screens, enabling them to be mounted in both landscape and portrait orientations. With levelling screws on each interface arm, fine-tuning the height after installation is made easy. Additionally, the arms boast a slim 48mm mounted depth from the wall, ensuring convenient access to cables and connectors.



SPECIFICATIONS


Recommended screen size	up to 47"
Max load	70kg
VESA® & non-VESA fixing	up to 200mm* (vertical dimension)
Depth (wall mounted install)	48mm

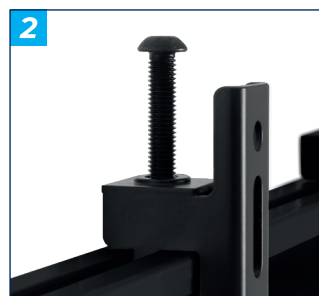
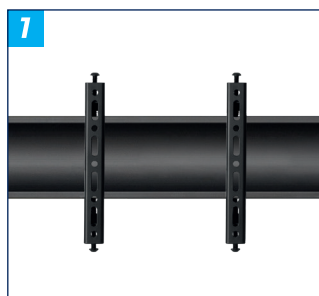
FEATURES

- Ideal for menu boards and other multi-screen installations
- 1** Universal design compatible with most screens
- 2** Includes levelling screws to adjust the screen height
- 3** Safety screws help prevent unauthorised removal of screens
- 4** Simple 'hook-on' installation
- Suitable for landscape or portrait mounting
- Lateral adjustment - position arms anywhere along the length of the rail
- Supplied in pairs
- TÜV certified



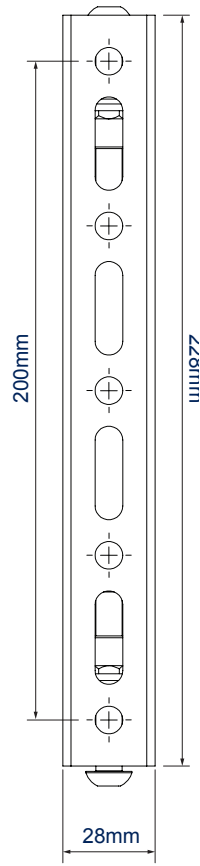
SYSTEM X™

RECOMMENDED MAX SCREEN	MAX LOAD	MAX VESA	POST INSTALL ALIGNMENT	TÜV CERTIFIED	QR CODE
47" 120cm	70kg	200	← →	TÜVRheinland	

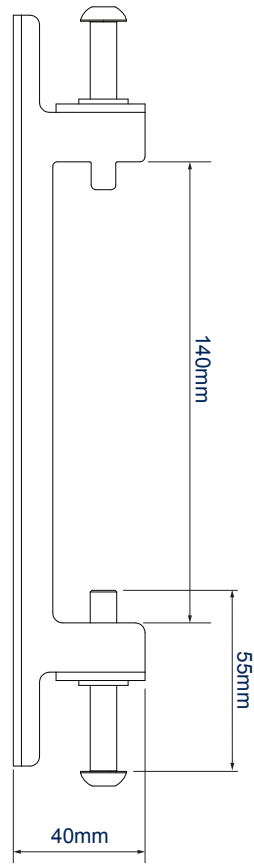


*The VESA specification of the BT8390-VESA200F refers to the vertical dimension only. All System X interface arms can be positioned as far along the rail as necessary.

BT8390-VESA200F



FRONT VIEW



SIDE VIEW

ORDERING INFORMATION

COLOUR	ORDER REF	EAN
Black	BT8390-VESA200F/B	5019318501203

RELATED PRODUCTS

PRODUCT CODE	NAME	DESCRIPTION
BT8390-WFK1	System X Rail Mounting Bracket	Designed to mount BT8390 Horizontal Rails to a wall or pole
BT8390	System X Horizontal Rails	Mounting rails in multiple lengths designed to support a variety of interface arms
BT8390-VESA400F	System X Fixed Interface Arms	Designed for screens with fixings patterns up to 400mm
BT8390-VESA200T	System X Interface Arms with Tilt	For screens with fixings up to 200mm on installations requiring a tilt function

© 2018 B.Tech. AV Mounts Co., Ltd. All rights reserved.
The information in this specification sheet reflects the current technical specifications at the time of printing.
We reserve the right to change the technical or physical specifications without prior notice. The B.Tech name and the B.Tech logo are registered trademarks of B.Tech. AV Mounts Co., Ltd.
B.Tech is not responsible for any damage or loss of data caused by improper installation or mounting on unstable structures. Any reproduction or reuse of information or specification of any part of this specification sheet is strictly prohibited unless prior written permission is granted by B.Tech. AV Mounts Co., Ltd. 2018.

SS-V3-BT8390-VESA200F-0601 24