

BT9901

XL FLAT SCREEN WALL MOUNT

Designed to mount extra-large screens, the BT9901 can support loads up to 220lbs, making it ideal for mounting heavy-duty touchscreens. The universal interface accommodates large mounting patterns up to 35.43" x 23.62" and features post-installation screen alignment and simple 'hook-on' installation to make screen mounting quick and easy.

SPECIFICATIONS

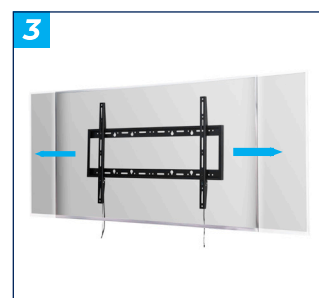
Recommended screen size	55" - 100"
Max load	220lbs
VESA® & non-VESA fixings	up to 900 x 600
Distance from wall	1.18"

FEATURES

- Designed to mount XL screens 55" and over
- 1 Low profile design
- 2 Simple 'hook-on' installation with all mounting hardware included
- 3 Post installation screen alignment for perfect screen positioning
- 4 Suitable for pole mounting from ceilings or floors
- Lateral adjustment of screen once mounted
- Keyhole wall fixings for easy mounting

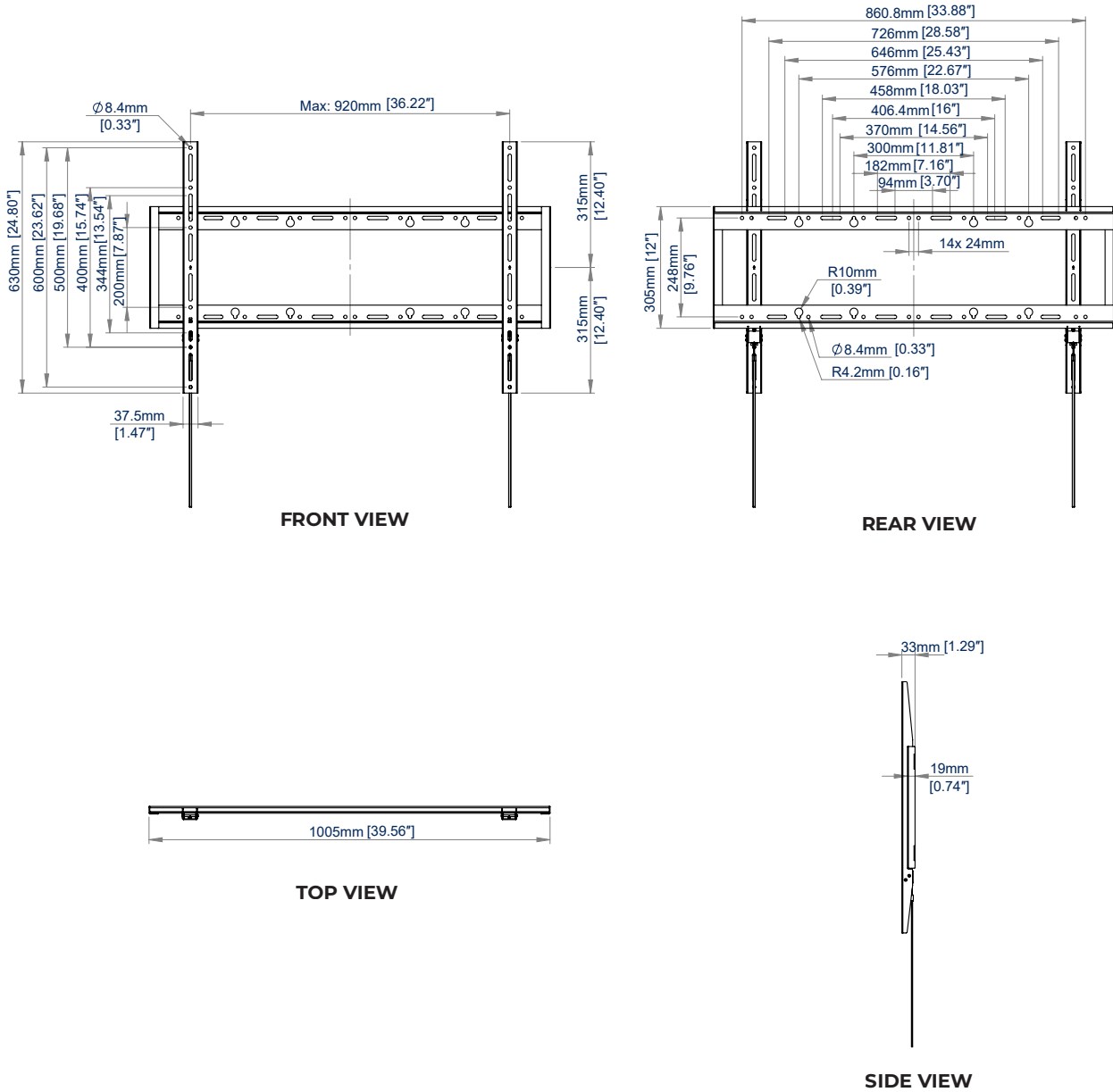


RECOMMENDED MAX SCREEN	MAX LOAD	MAX VESA	POST INSTALL ALIGNMENT	COLLAR COMPATIBLE	QR CODE
100" 254cm	220lbs	900 x 600			



*Please note using the included Interface Adapter Arms to mount VESA 600 x 400 screens will increase the total depth of the product by 0.23", for a total depth of 4.21", or 11.77" whilst popped out (+/-0.27" micro-adjustment).

BT9901



ORDERING INFORMATION

COLOR	ORDER REF	UPC
Black	BT9901/B	811867037722

RELATED PRODUCTS

PRODUCT CODE	NAME	DESCRIPTION
BT7031	Adjustable Accessory Mounting Arm	Mount AV accessories above or below the screen on the BT9901
BT9903	XL Heavy Duty Flat Screen Wall Mount	Ideal for mounting larger screens up to 120"
BT8448	XL Heavy Duty Flat Screen Ceiling Mount	Ceiling mount for screens up to 120"
BT8506	XL Flat Screen Display Cart	Mobile Cart for screens up to 120"

© 2015 B-Tech AV Mounts, Inc. All rights reserved.
 The information in this document is subject to change without notice. The B-Tech name and the B-Tech logo are registered trademarks of B-Tech AV Mounts, Inc. All other trademarks are the property of their respective owners. B-Tech is not responsible for any damage caused by improper installation or mounting on unstable structures. Any reproduction or use without permission is prohibited. All rights reserved.
 SS-BT9901-1-080424-NA