



65"4K 75"4K 86"4K

If you're looking for an easy-to-use, flexible, and affordable front-of-classroom display, look no further than the ActivPanel LX.

Designed to work with your current technology platform—along with the software and apps you know and love—this robust interactive display provides the quality, dependability, and versatility you expect from Promethean.

ActivPanel LX



Why choose the ActivPanel LX

The ActivPanel LX is a reliable, high-quality edtech solution that offers superior value, ease of use, flexibility, and versatility for the evolving classroom environment. It provides distinct benefits for all education stakeholders—from teachers to IT administrators to school leaders.

Incredible quality and value for a low price

The ActivPanel LX offers an impressive array of features at a low price, so you can rest assured you'll be using it for many years to come.

- A crystal clear 4K display that leverages HDMI 2.0 technology
- Gigabit ethernet ports for uncompromised network speeds to a connected OPS device
- LCD bonded glass offering excellent writing and viewing experiences
- Advanced touch technology providing pen and touch differentiation, palm erase, and 20 points of touch
- Dual front-facing speakers, an integrated full-length pen tray, and a wall mount

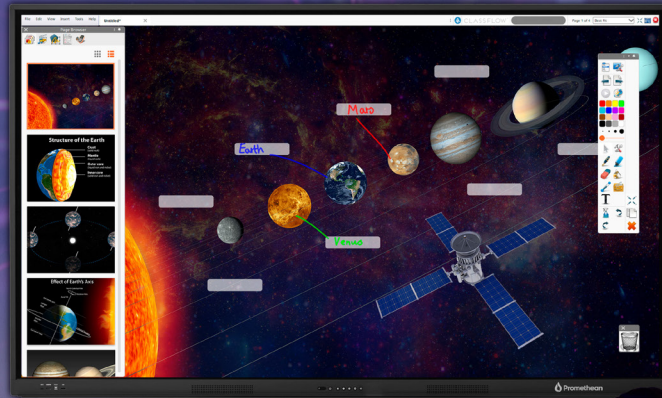
Beautifully simple, and so easy to use

Because the ActivPanel LX works with the hardware, software, and apps you currently use, there's no learning curve. That means teachers can start delivering engaging, interactive lessons right away. The ActivPanel LX is easy to install and set up, requiring minimal training and limited support from IT staff. Not only that, IT administrators won't need to enroll, manage, or frequently update the panels, or deal with security issues.

Seamless integration with the tech you use today

The ActivPanel LX can be connected to a laptop with a single USB-C cable, instantly turning your computer into a large-format interactive display. It can also be paired with a computing module that fits your preferred ecosystem—whether it be Google, Windows, or Android—giving you maximum flexibility. And as your edtech evolves and your needs change, your ActivPanel LX will always be able to adapt.

Simplicity. Flexibility. Value.



ActivPanel LX

Promethean offers a variety of accessories to complete your technology solution and help you use your ActivPanel to its full potential.

This Google certified Android device provides:

- Access to Promethean apps on the panel
- Access to the Google Play Store
- An intuitive and seamless user experience
- Enhanced collaboration and sharing capabilities
- Ease of use with minimal training required
- Device management via Promethean Admin Tools, Google Admin, or Radix



This Linux-compatible Windows device provides:

- Compatibility with the Windows ecosystem
- An all-in-one, large-format Windows experience
- Access to the Microsoft Store and One Drive
- Access to Promethean apps through the web
- Ease of use with minimal training required
- Device management via Radix



This Google certified Chrome OS device provides:

- Compatibility with the Google ecosystem
- An all-in-one, large-format Chromebook experience
- Access to the Google Play Store
- Access to Promethean apps through the web
- Ease of use with minimal training required
- Device management via Google Admin or Radix



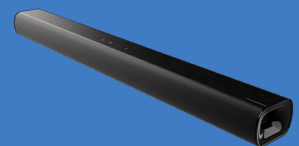
Versatile stands and mounts

Promethean offers a variety of mobile, fixed, and height-adjustable stands and mounts to fit your requirements. Availability varies by region.



Powerful lesson delivery software

Promethean's award-winning ActivInspire helps teachers create fun, dynamic lessons that engage and inspire.



Premium sound system

The Promethean ActivSoundBar is the perfect addition to your ActivPanel LX set-up, delivering powerful, crystal-clear, immersive sound to the classroom.

Learn more about ActivPanel LX at [Prometheanworld.com/ActivPanelLX](https://www.prometheanworld.com/ActivPanelLX)