

STANDARD PLENUM RATED EQUIPMENT ENCLOSURES

Meeting NEC & UL 2043 Code Requirements for the Installation of Equipment and Power in the Plenum or Ceiling Space®

It's 14" x 14" and almost 5" high allow many different types and sizes of equipment to be installed inside its extremely Strong Aluminum Interior. For example, some of the many products from Companies such as Crestron®, AMX®, Altec Lansing Commstar®, Extron® and all Nigel B Products etc, have been Installation tested



HEAVY DUTY POLE MOUNT BRACKET

The Heavy Duty NB-PEBPM Pole Mount used in the Pole Mount Version of the Plenum Box has been engineered to take weights in excess of 150 lbs.

FLAT SURFACE / WALL MOUNT OR HANGING

The NB-PLWB comes with a Flat Surface/Wall Mount, allowing the Plenum Equipment Box to be attached to any Wall, Flat Surface or Suspended using our NB-PLHK Hanging Kits, which are UL/CSA rated to 100 lbs.

UNISTRUT® MOUNTING

Using our new combined Unistrut® Pole Mount Bracket attached to the rear of the Plenum Equipment Enclosure it is now possible to mount the Enclosure to any Unistrut Fitting or 1 5/8" Channel. At the Lower end, the Bracket comes with a 1 1/2" Pole Mount allowing easy attachment to any Pole Mount fitting or Projector



1 1/2" Heavy Duty Pole Mount is engineered to hold approx 150 lbs

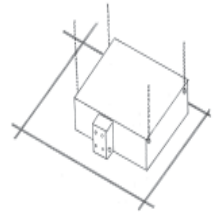


Flat Surface or Wall Mount

NB-PLHK
Optional Hanging Kit
is UL Listed



Model NB-PLWB
Plenum Equipment Box
with Flat Surface Mount
attached

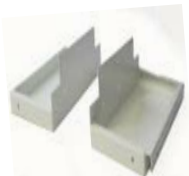


THE PLENUM EQUIPMENT ENCLOSURE

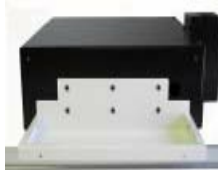
The Enclosure itself is not itself load restricted, as the weight limit is determined mainly by the suspension method used (Pole, Cable or Unistrut®). Made from .060" Aircraft Grade Aluminum the Enclosure itself will safely hold 50 lbs of installed Equipment.

USING OUR NEW CEILING TILE SUPPORT BRACKETS

The Ceiling Tile Supports, when attached to our Plenum Equipment Enclosure, eliminates the need for a separate Ceiling Tile Kit. Fixing to the Support Brackets and Plenum Equipment Enclosure is a simple matter of screwing six screws per side. The entire assembly then sits on the Ceiling Tile Grids. Then attach the supplied Hanging Kit Cables to the Plenum Equipment Enclosure



Ceiling Tile Supports



Plenum Equipment Box shown fitted with Supports sitting on Grid Frame



WIRING AND CABLE ENTRY

More than enough Wiring and Cable Entry and Exits Ports are provided. For the Pole Mount Version, most Cables are run inside the Pole. In addition 1 Port is for Power and an additional one is available for other uses. For the Flat Surface Mount/Hanging version, one is used for Power and two additional ports are available for connection to additional 1/2" conduits.



Power Outlet
Built In
(see Over)

Pole Mounted Plenum Box

Need more outlets for your equipment?
(see solutions on next page)



Cover is easily removed
for access at any time
Interior View showing some
equipment installed



Power Outlet
Built In
(see Over)

Flat Surface/Hanging Plenum Box

COOLING THE INSTALLED EQUIPMENT

We use Conventional Cooling Methods for cooling. The Pole Mount version allows air intake through the bottom of the Pole and exhausts any warm air from the Plenum Box through the top of the pole. Slots in the top and bottom of the Flat Surface Mount allow air to pass through the unit. This we call the Chimney Effect which allows the inside of the Plenum Box to remain cool.

Please turn over for Pricing and other Information

In order to meet NEC and State Code regulations, it is important to understand the main parts of the Code that regulate how equipment and wiring can be installed in a Plenum or Ceiling Space.

NEC ARTICLE 400-8 and 400-8(5).....page 219 of the code states: That Flexible Cords and Cables are not permitted to be run through Walls, Structural ceilings, Suspended Ceilings, or Dropped Ceilings. In addition the revision to 400-8 specifically prohibits these cords being used without being properly enclosed. Regulations also prohibits the Installation of open Power Outlets in these spaces.

All Our Plenum Enclosures all Wiring and Cables including the Power Receptacle meeting all NEC Code Requirements

To Ceiling Speakers



The Supplied Power Outlet is installed **Inside** all Plenum Boxes to meet NEC Code Requirements



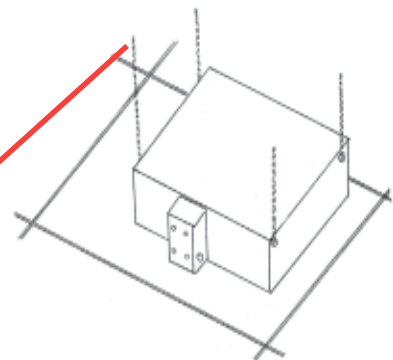
Need more outlets for your equipment?



Port Plugs are fitted both Sides



By removing the Port Plugs, standard 1/2" Conduit can be used to provide Cable Entry & Exit Points



Hanging Plenum Box Installation

Power Supply to Projector

Line In to Amplifier



Pole Mount Installation



Eye Bolts are attached to each corner of the Plenum Box To allow the Unit to be hung

The Hanging Kit is UL & CSA Listed and is Rated with a safe working load of 100 lbs



The Pole Mounted Plenum Enclosures uses standard 1 1/2" Pipe fittings, the Equipment Enclosure can be easily attached to the Projector's Pole

Interior Dimensions: 14" x 14" x 4.75 High. Weight: 5 lbs Shipping size:

Shipping Weight



Click on CAD Button on Main Screen to Download CAD images in both DWG and pdf Formats

PART #	DESCRIPTION	LIST PRICE
NB-PLWB	Hanging Plenum Equipment Enclosure	\$373.95
NB-PEBPM	Pole Mount Plenum Equipment Enclosure	\$373.95
NB-PEBUS	Unistrut® Mounted Plenum Equipment Enclosure	\$373.95
NB-PLHK-5	5' Hanging kit for Hanging Plenum Equipment Enclosure	\$98.95
NB-PLHK-15	15' Hanging Kit for Surface/Hanging Plenum Equipment Enclosure	\$109.95
NB-CTSSPB	Ceiling Tile Supports For Standard Plenum Equipment Enclosure	\$197.95



An original Nigel B Design
Exclusively manufactured in the USA by:

Nigel B Design, Inc. CA USA. Tel: (818) 487-9323 Fax: (818) 766-9805
Web Site: www.nigelbdesign.com E-Mail: sales@nigelbdesign.com