



### OVERVIEW

The PoE Double-Sided IP Display with Universal Mount (IPCDS-RWB-U) works well for corridors, hallways, and any space that requires viewing from both sides. The universal mount provides the option to mount from the wall or ceiling. The angled-display reduces glare and improves readability.

#### AUDIO



Two 4" high-efficiency speakers  
Audio coverage up to 600 ft<sup>2</sup> on each side

#### MICROPHONE



Hands-free talk back  
Monitoring

#### FLASHERS



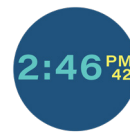
One red, one white, one blue  
Individually controlled

#### LIGHT SENSOR



Auto-dimming display

#### DISPLAY



Viewable up to 40 ft  
1-line or 2-line display  
Multi-color scrolling text  
and pixel graphics

#### MOUNTING



Mount from wall or ceiling

#### ANALOG INTEGRATION



Connect strobes, motion  
sensors, electronic locks,  
call buttons, etc.

#### SOFTWARE



Diagnostic software included  
Compatible with third-party  
software, including InformaCast,  
Revolution, and Cisco CallManager

#### SIP INTEGRATION



SIP-enabled  
Easily interfaces with  
VoIP/SIP phone systems

### SOLUTIONS

- Paging
- Intercom
- Bell scheduling
- Code alerts
- Emergency notification
- Access control
- Security monitoring
- Sound masking
- Music streaming

### ADDITIONAL FEATURES

- Built-in web server
- Full multicast and broadcast support
- Requires PoE Cat 5/6 cable
- Atomic time
- Peripheral Interface Adapter Board provides (sold separately):
  - Audio line in
  - Audio line out
  - 2 general purpose inputs
  - 1 general purpose output relay

### COMPATIBLE PERIPHERALS

**Strobe Kit**  
AND-STROBE-KIT-1D

**Call Button Kit**  
AND-BTN-KIT-1D

**Peripheral Interface Adapter Board**  
AND-PIA-2D

## SOFTWARE

The IPCDS-RWB-U integrates easily with third-party mass notification software, as well as SIP and VoIP phone systems, enabling a facility to take advantage of all the device capabilities. The device also comes with diagnostic software (compatible to run alongside third-party software), and an on-board web server interface, both which provide the ability to monitor and troubleshoot the ANetD devices on the network.

### Third-Party Software

- InformaCast (Singlewire)
  - Revolution (Syn-Apps)
  - IPSession (IPCelerate)
  - MessageNet Systems
  - BellComander (Acro Vista)
- And more!

### VoIP Phone Systems

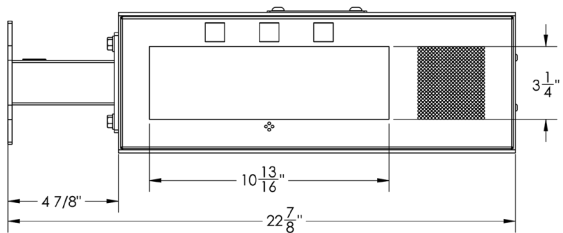
- Cisco CallManager
  - Mitel
  - Avaya
  - 3CX
  - Polycom
- And more!

### IPClockWise

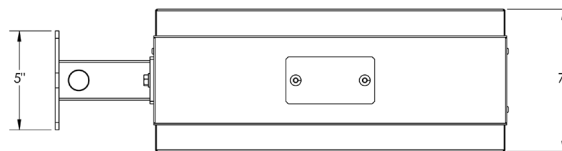
- Diagnostic tool included with device purchase
- Complements investment in third-party software
- Developed and supported by Advanced Network Devices

## DIMENSIONS

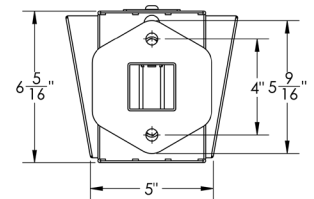
Wall Mount Front



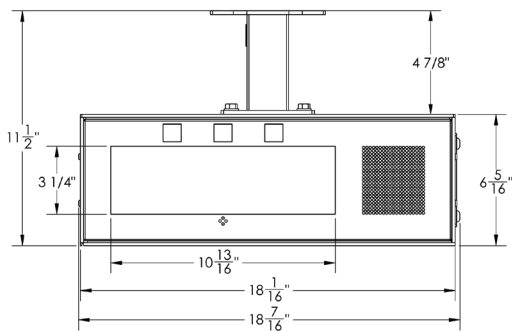
Wall Mount Top



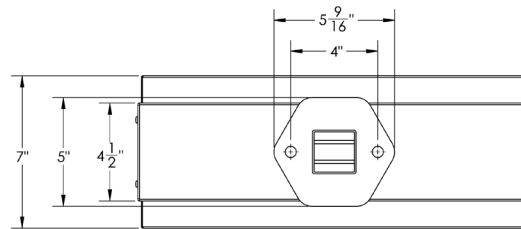
Wall Mount Side



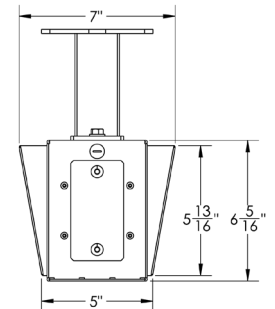
Ceiling Mount Front



Ceiling Mount Top



Ceiling Mount Side



## SPECIFICATIONS

## IPCDS-RWB-U

ETHERNET I/F	10/100 Mbps
AUDIO POWER	8 W / 16 W
SPEAKER SIZE	4"
AVERAGE SENSITIVITY	94dB, 1W / 1 M
FREQUENCY RESPONSE	150 Hz - 17 kHz
AUDIO PAYLOAD TYPES	G711, A-law and $\mu$ -law
POWER INPUT	PoE (IEEE802.3af) 15.4 W or PoE+ (IEEE802.3at) 30.0 W (recommended)
SUPPORTED PROTOCOLS	SIP, IPv4, IPv6, 802.1X, HTTP, SLP, TFTP, NTP, SNMPV1 & SNMPV2c, DHCP, IGMP, ICMP, TCP/IP, LLDP-MED, UDP, MDNS & MDNS-SD
OPERATING TEMPERATURE	-10° TO 50° C (14° TO 122° F)
DIMENSIONS	Wall Mount: 22.9" W x 6" H x 7" D (including mount) Ceiling Mount: 18" W x 11.5" H x 7" D (including mount)
WEIGHT	22 lbs (9.98 kg)
WARRANTY	2 Year Limited

Due to continual product development, specifications are subject to change without notice.



Advanced Network Devices | 3820 N. Ventura Dr. Arlington Hts. IL 60004  
847-463-2236 | sales@anetd.com | www.anetd.com

