

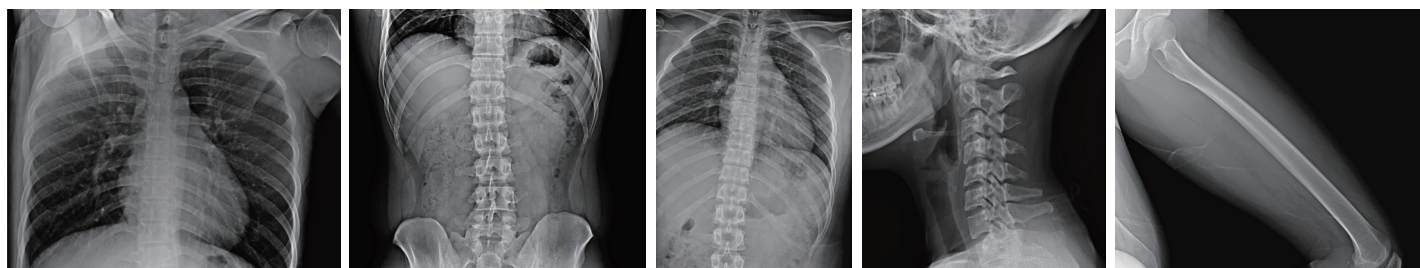
LG Digital X-ray Detector



17HK700G-W
17HK701G-W | 14HK701G-W

Superior Image Quality for Diagnostic Confidence

Highly Sensitive CsI AED^{*} Detector with 16bit AD Conversion (Data Input & Output) ^{*}Auto Exposure Detection



Light yet Durable

IP41: Water Resistance & Dustproof



Solids Level 4
Protected against objects of size 1mm or larger

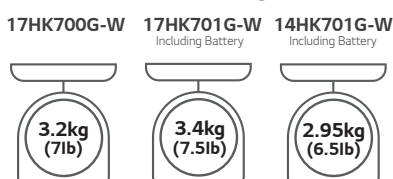


Liquids Level 1
Protected against dripping liquids, such as blood and bodily fluids

Magnesium & Carbon-fiber Body

With a super strong body that combines carbon-fiber with magnesium, The LG DXD is not only lightweight, but also exceptionally strong.

Product Weight



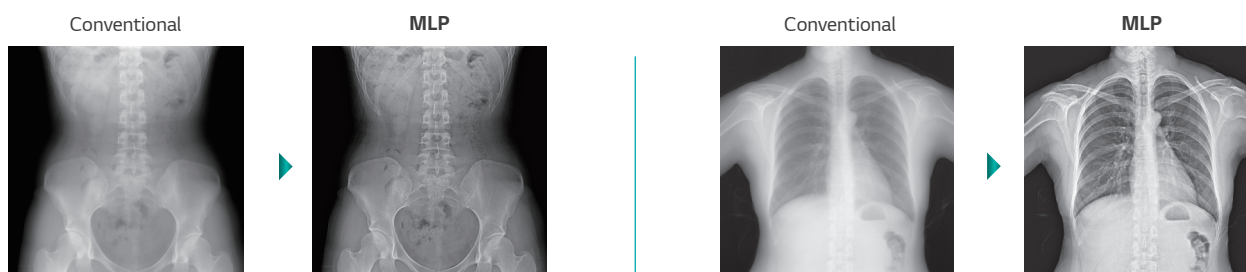
Maximum Load Weight



Acquisition Workstation Software(AWS) for LG DXD

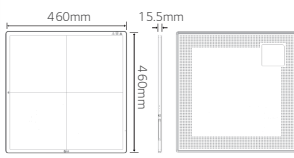
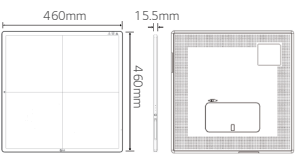
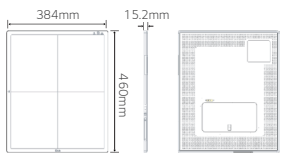
Multi-layer Image Processing (MLP)

Multi-layer image processing embedded in AWS provides well-balanced visualization at each frequency level. Its contrast enhancement processing functions such as detail contrast, sharpen and de-noise improve tissue visibility within an image.



Specification

Digital X-ray Detector

Model Name		17HK700G-W (Wired)	17HK701G-W (Wired / Wireless)	14HK701G-W (Wired / Wireless)
External Dimension / Weight		460mm x 460mm x 15.5mm 	460mm x 460mm x 15.5mm 	384mm x 460mm x 15.2mm 
		3.2kg, 7lb	3.4kg, 7.5lb (Incl. Battery)	2.95kg, 6.5lb (Incl. Battery)
Intended Use		General Radiography		
TFT Type		A-si		
Scintillator		CsI		
Pixel Size		140 μ m		
Image Area	X-ray Sensitive Pixel	3072 x 3072 pixels	3072 x 3072 pixels	2500 x 3052 pixels
	X-ray Sensitive Area	430.08 x 430.08 mm	430.08 x 430.08 mm	350 x 427.28 mm
MTF	MTF @ 0.5lp/mm	(Typ.) 89%		
DQE	DQE @ 0.1lp/mm	(Typ.) 72%		
A/D Conversion		16bit		
Data Output		16bit		
Communication	Type	Wired	Wired / Wireless	Wired / Wireless
	Wireless	-	IEEE802.11a/b/g/n/ac, 2.4GHz / 5GHz	IEEE802.11a/b/g/n/ac, 2.4GHz / 5GHz
	AED (Auto Exposure Detection)	Support		
Cycle Time		8sec.	8sec. (Wired) / 11sec. (Wireless)	8sec. (Wired) / 11sec. (Wireless)
Full Image		3sec.	3sec. (Wired) / 6sec. (Wireless)	3sec. (Wired) / 6sec. (Wireless)
Durability	Maximum Load Weight	Full (Uniform Load) : 150kg, 331lb Local (Point Load) : 100kg, 220lb		
	Resistance Rating	IP41		
	Sensor Protection Plate	Carbon Fiber Plate		
Battery	Operating Time	-	(Typ.) 240 shots / 6.0hrs. (Condition : Interval Time 90sec.)	(Typ.) 240 shots / 6.0hrs. (Condition : Interval Time 90sec.)
	Duration in Standby Status	-	(Typ.) 13hrs.	(Typ.) 13hrs.
	Charging Time	-	3hrs.	3hrs.

Acquisition Workstation Software

Installation Requirement	OS	Microsoft Windows 7, 10(64 bit)
	DB	MariaDB
	Processor Options	Intel CPU Desktop 6th gen i7 or above
	RAM	8GB
	HDD	2TB

LG Electronics Inc.

<http://www.lge.com>

Copyright © 2018 LG Electronics. All Rights Reserved.