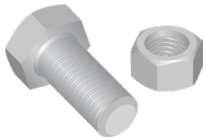
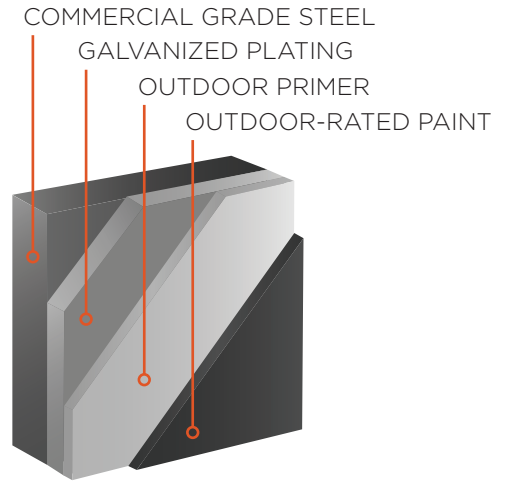


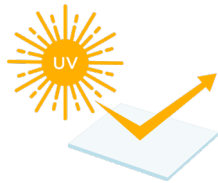


GET OUT THERE WITH **CHIEF OUTDOOR MOUNTS**

Outdoor AV installs bring new life to open air spaces, but they also bring new challenges. Extreme temperatures, moisture and UV exposure can lead to faded color, brittle plastic and rusting metal. This can potentially lead to rust-damage on the install, as well as the surrounding architecture. Ceiling and pedestal mounts need extra features to withstand wind. To combat these problems, Chief's outdoor mounts are designed with multiple levels of protection, giving your install a leg up on the elements and providing you with peace of mind.



**STAINLESS STEEL
HARDWARE**



**UV-RESISTANT
PLASTICS**



**WIND
RESISTANT**



**QUALITY
ASSURANCE**



WARRANTIED





WALL MOUNTS

FEATURES

- Listed to UL 2442 Part 2 – Suitable for outdoor use
- Warrantied for outdoor use
- Galvanized plating, stainless steel hardware and outdoor primer prevent against corrosion and leads to longer life of the mount
- Outdoor-rated paint meets AAMA 2604-05 Standard for 5-year color retention and chalk resistance
- UV-resistant plastics fight against sun damage

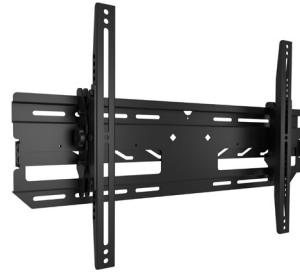
SPECIFICATIONS

ODMLA25 – Outdoor Swing Arm Mount

Extension: 21.66" (550 mm)
Mounting Patterns: 75 x 75 – 709 x 444 mm
Weight Capacity: 150 lbs (68 kg)
Tilt: +/-15°
Lateral Shift: NA
Dimensions: 18.5" x 29.45" x 4.88" (470 x 748 x 124 mm)

ODMLT – Outdoor Tilt Mount

Mounting Patterns: 127 x 100 – 643 x 430 mm
Weight Capacity: 175 lbs (79.3 kg)
Tilt: +/-15°
Lateral Shift: 2" (51 mm)
Dimensions: 18" x 29" x 3.27" (457 x 737 x 83 mm)



CEILING AND PEDESTAL MOUNTS

When combating wind elements, extra care needs to be taken in the mount design. An included wind deflector for single-sided installations provides an additional layer of defense to protect technology that may not be designed for wind exposure. This modular system allows for better specification and easier installation.

FEATURES

- Listed to UL 2442 Part 2 – Suitable for outdoor use
- Warranted for outdoor use
- Galvanized plating, stainless steel hardware and outdoor primer prevent against corrosion and leads to longer life of the mount
- Outdoor-rated paint meets AAMA 2604-05 Standard for 5-year color retention and chalk resistance
- UV-resistant plastics fight against sun damage
- Engineered to avoid catastrophic failure, columns are designed to flex under extreme wind loads, mitigating potential for damage to facilities
- Ceiling and pedestal mounts wind-compatible to 2000 ft-lbs maximum moment force
- Columns provide 12 inches of adjustment ranges at 1-inch increments and are available up to 6 feet for ceiling installations and 8 feet for floor installations
- Simple three-piece system for better customization, mount, column and plate
- The four-step installation process keeps each piece separate for a safer, more manageable lifting load
- The plate is fastened using 2 oversized holes, allowing the remaining holes to be used as a drilling template

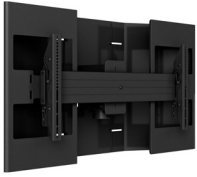




SPECIFICATIONS

Mounting Pattern: 200 x 100 mm – 800 x 400 mm

Tilt: +7.6 degrees to – 20 degrees



OLCM1U
Single Ceiling and Pedestal Mount, Large

Weight Capacity: 250 lbs (113.4 kg)

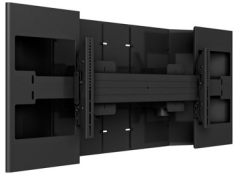
Number of Monitors: 1



OLCB1U
Back-to-Back Ceiling and Pedestal Mount, Large

Weight Capacity: 125 lbs (56.7 kg) per display

Number of Monitors: 2



OXCM1U
Single Ceiling and Pedestal Mount, XL

Weight Capacity: 250 lbs (113.4 kg)

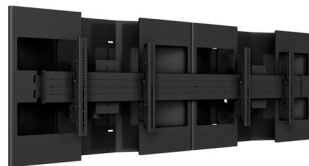
Number of Monitors: 1



OLCB1U
Back-to-Back Ceiling and Pedestal Mount, XL

Weight Capacity: 250 lbs (113.4 kg) per display

Number of Monitors: 2



OLCM2X1U
2x1 Ceiling and Pedestal Mount

Weight Capacity: 250 lbs (113.4 kg) per display

Number of Monitors: 2



OLCB2X1U
Back-to-Back 2x1 Ceiling and Pedestal Mount

Weight Capacity: 125 lbs (56.7 kg) per display

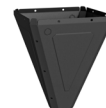
Number of Monitors: 4

SKU	Name	Adjustments	Length
<u>ODAC0203B</u>	2-3 Foot Outdoor Ceiling Column	23-36" (584-914 mm)	29.75" (755 mm)
<u>ODAC0304B</u>	3-4 Foot Outdoor Ceiling Column	33-48" (838-1219 mm)	42.75" (1060 mm)
<u>ODAC0405B</u>	4-5 Foot Outdoor Ceiling Column	45-60" (1143-1524 mm)	53.75" (1365 mm)
<u>ODAC0506B</u>	5-6 Foot Outdoor Ceiling and Pedestal Column	57-72" (1448-1828 mm)	65.75" (1670 mm)
<u>ODAC0708B</u>	7-8 Foot Outdoor Pedestal Column	81-96" (2057-2438 mm)	88.25" (2241 mm)



ODA330B
Outdoor Concrete Ceiling and Pedestal Plate

- Can be installed in ceiling or floor cement
- Poured concrete – requires only 4" minimum anchor embedment with 5000 psi minimum compressive strength
- Pre-cast concrete – requires only 2" minimum anchor embedment with 6000 psi minimum compressive strength
- Weight capacity of 400 lbs. (181.4 kg)



ODAPCVRB
Outdoor Plate Cover

- Aesthetic cover for the ODA series outdoor ceiling and pedestal plates.



**CHECK OUT THE CHIEF TEAM
IN ACTION AS THEY ROAD TEST
OUTDOOR MOUNTS**



Our Customer Care team can help determine if the mounts will work with your particular installation based on a variety of factors like display height, elevation, regional wind rating and exposure.



INSTALLER INSPIRED | legrandav.com

USA P 866.977.3901 E av.chief.support@legrand.com
CANADA P 877.345.4329 E av.chief.canada@legrand.com
EMEA P +31 495 580 840 E av.emea.sales@legrand.com
APAC P +852 2145 4099 E av.asia.sales@legrand.com

©2019 Legrand AV Inc. 190206 Rev A 10/19 Chief is a registered trademark of Legrand AV Inc. All other brand names or marks are used for identification purposes and are trademarks of their respective owners. All patents are protected under existing designations. Other patents pending.



COMMERCIAL BRANDS

Chief | Da-Lite | Luxul | Middle Atlantic | Projecta | Vaddio