



### Content to VideoWall in 3 clicks.

VideoWall is the easiest way to display NDI® and NDI® HX video files across multiple screens in conjunction with BirdDog PLAY hardware. Simply choose either a 2x2 or 3x3 screen layout, assign your PLAY to each screen, and choose the NDI® video file.

Simple. Elegant. Revolutionary.



### 4K Support.

VideoWall supports resolutions up to 3840x2160.



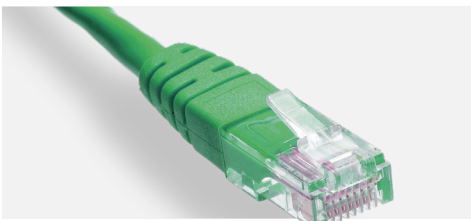
### Choose Your Receiver.

VideoWall supports both PLAY and M1 SDM to create fully networked and low-cost video wall displays.



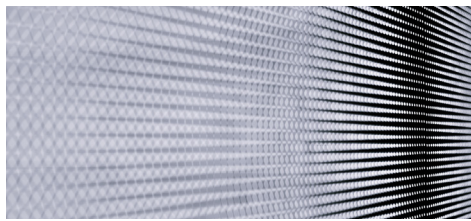
### NDI and NDI HX. RUDP Too.

VideoWall supports NDI®, NDI® HX2, and NDI® HX3 with all the latest and greatest NDI® 5 functions including Reliable UDP transmission protocol.



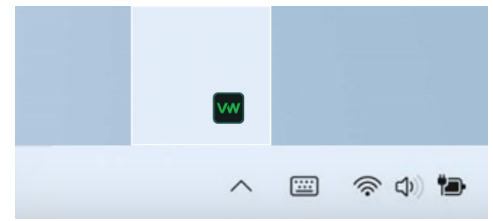
### Super Easy Networking.

With the Videowall and PLAY solution the networking side is a breeze. All you need is a 1GbE cable to each BirdDog PLAY, a Layer-3 DHCP enabled network switch. Connect each PLAY to the switch, connect the switch to the Windows machine running VideoWall and you are all set.



### Effortless Configuration.

VideoWall allows each PLAY to be assigned to each screen from within the application without needing to open the PLAY interface. Once each PLAY has been assigned to each screen that's it, you are all set never need touch the settings again and to change NDI® sources it is as simple as 2 clicks.



### Windows 11 System Tray App.

VideoWall lives in your Windows 11 System Tray for easy access anytime. You can pin to your desktop or close without affecting the NDI® stream.



## PLAY

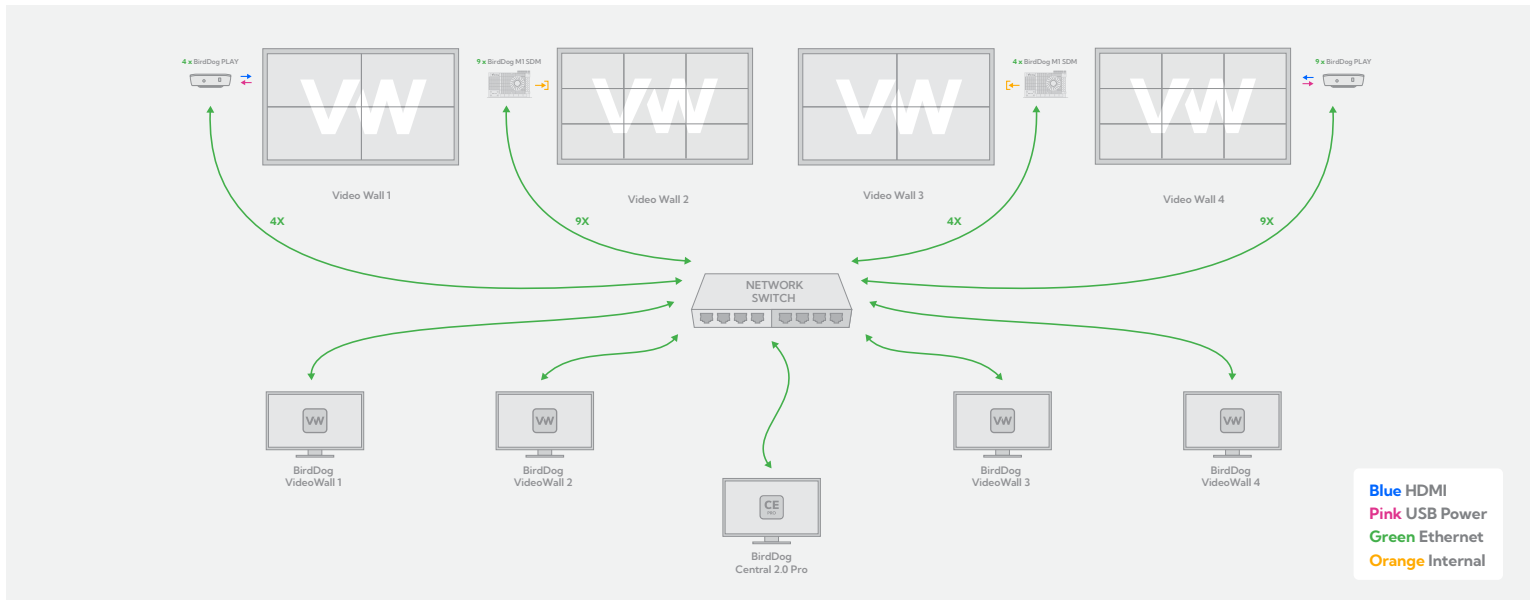
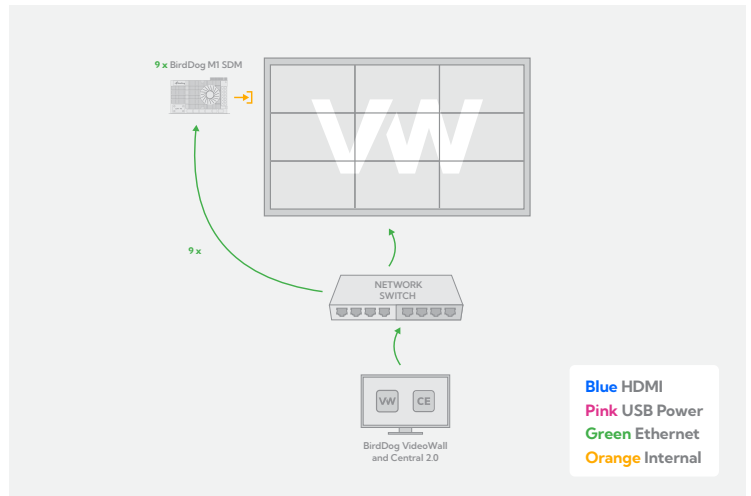
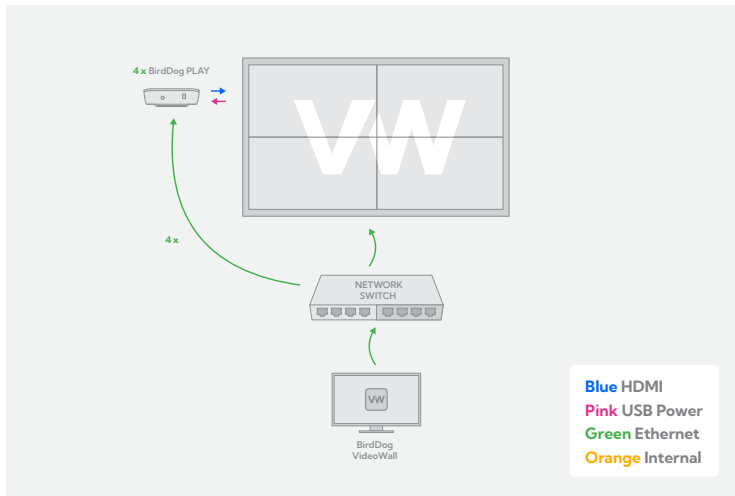
Meet PLAY, the newest and smallest HD & 4K NDI® Player with full support for NDI® 5. Now connections are a breeze, simply connect PLAY to your NDI® network, plug it into your TV via HDMI, and use your own remote to browse sources and instantly connect.



## SDM

Built upon Intel® SDM platform the BirdDog SDM Family will revolutionise the way content is distributed to even the largest installations. Simply install the SDM module inside an SDM compatible flat panel display for the most integrated and scalable NDI® to screen solution available. No more wall boxes or patch panels, now the AV distribution is built directly into the display.

## VideoWall Workflow



TECH SPECS	VIDEOWALL	
SYSTEM REQUIREMENTS	CPU - Intel i7 10th Gen RAM - 16GB OS - MS Windows 11	
BUNDLES	VIDEOWALL	MSRP
PLAY & VW BUNDLE	4 x PLAY, VideoWall Software	\$995 USD
PLAY & VW BUNDLE	9 x PLAY, VideoWall Software	\$1695 USD

BirdDog.tv

