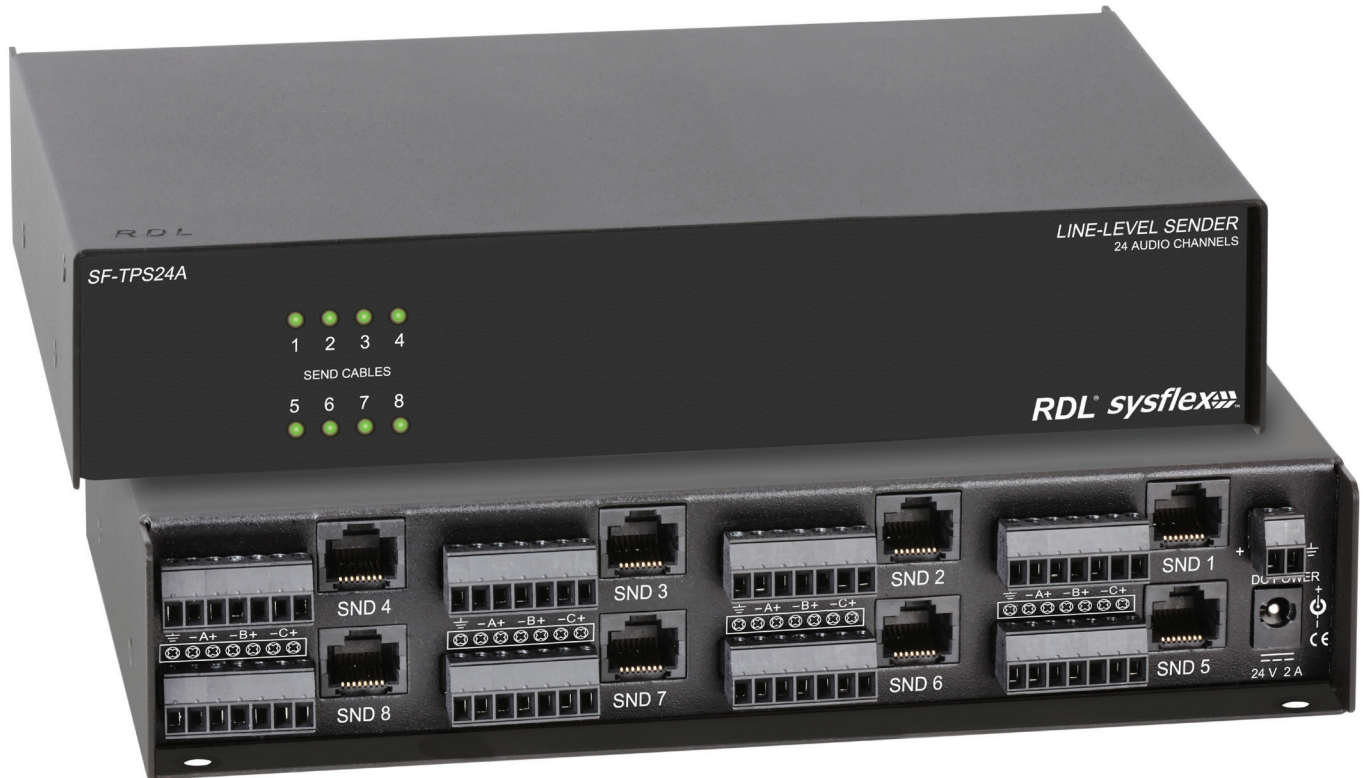


Model SF-TPS24A Line-Level Sender



- Eight Separate Three-Pair Format-A Sender Sections
- Sends up to 24 Audio Channels
- Three +4 dBu Balanced Inputs per Section
- Detachable Terminal Block Inputs
- Audio Inputs to Feed Pairs A, B and C per Section
- Utilizes All Three Format-A Pairs
- Local Power Feeds all Modules Connected to RJ45 OUTPUTS
- Wiring Fault Protection by Automatic Resetting Fuse
- Local Power Input on Terminal Block or dc Power Jack
- Green LED per Section Indicates Validity of Module Remote Power

APPLICATION: The SF-TPS24A is an eight-section audio sending chassis compatible with RDL Format-A twisted pair products. Three +4 dBu balanced line-level sources may be connected to each section on a detachable terminal block. That section converts and transmits those signals on pairs A, B and C of the associated RJ45 connector.

The SF-TPS24A feeds all three signal pairs in the twisted pair cable. No other sending modules may be connected on the same cable with each RJ45 output.

The SF-TPS24A may be powered directly from a 24 Vdc power supply using either the power jack or the detachable terminal block. Local power connected to the module is also fed to all modules connected to the eight OUTPUT RJ45 jacks. Power for each RJ45 connector is protected against wiring faults by an automatically resetting fuse. Front-Panel green LEDs indicate valid module power on each RJ45.

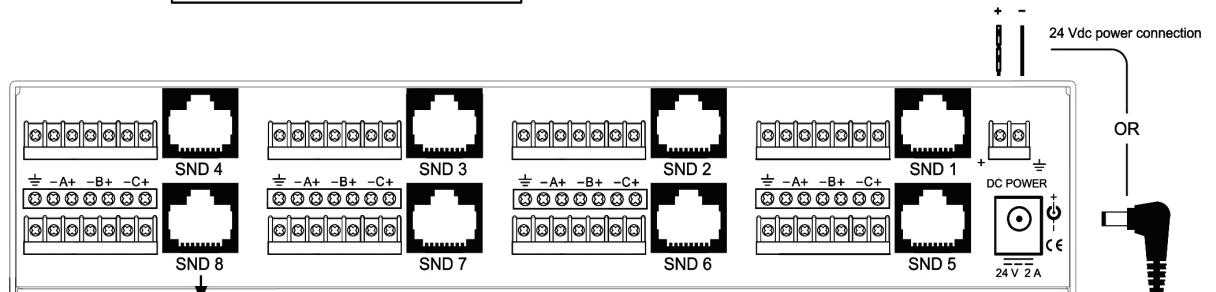
Model SF-TPS24A Line-Level Sender

Installation/Operation

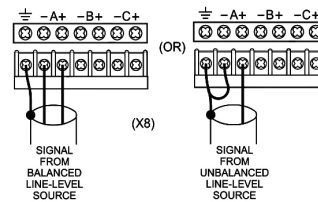
CE Declaration of Conformity available from rdlnet.com.
Sole EMC specifications provided on product package.
Specifications are subject to change without notice.



Front-Panel green LEDs indicate valid module power on each RJ45.



Connection to Format-A Receiver(s)
or
Connection to Format-A Receiver(s) via
an RDL Twisted Pair Power Inserter
or
Connection to Format-A Distributor Input



TYPICAL PERFORMANCE

Inputs (24):	20 kΩ balanced
Input Connection:	Detachable Terminal Block (Balanced)
Input Level:	+4 dBu Bal.; +22 dBu Max
Format-A Signal Pairs Used (3):	A, B, C (per section)
Output:	RDL Format-A
Output Connection:	RJ45
Frequency Response:	10 Hz to 50 kHz (± 0.1 dB)
THD+N:	< 0.005%
Noise below +4 dBu:	< 90 dB
Crosstalk:	< 85 dB (20 Hz to 20 kHz)
Headroom above +4 dBu:	> 18 dB
CMRR:	> 60 dB (50 Hz to 150 Hz)
Indicators (8):	Power (1 per RJ45)

Power Connections (2):
Ambient Operating Environment:
Power Requirement:

Dimensions:

Package Type:
Package Dimensions:

Shipping Weight:
WEEE weight:
Tariff code:

Power Jack; Detachable Terminal Block
0° C to 50° C
24 Vdc @ 440 mA (per board)
plus connected loads (1.6 A max)
8.74" (22.2 cm) W; 1.68" (4.27 cm)
H; 5.78" (14.68 cm) D
Cardboard Box
9.5" (24.1 cm) W; 2.25" (5.71 cm)
H; 7" (17.8 cm) D
2.64 lbs.
2.3 lbs.
8543.70.9960

Radio Design Labs Technical Support Centers

U.S.A. (800) 933-1780, (928) 778-3554; Fax: (928) 778-3506

Europe [NH Amsterdam] (+31) 20-6238 983; Fax: (+31) 20-6225-287