

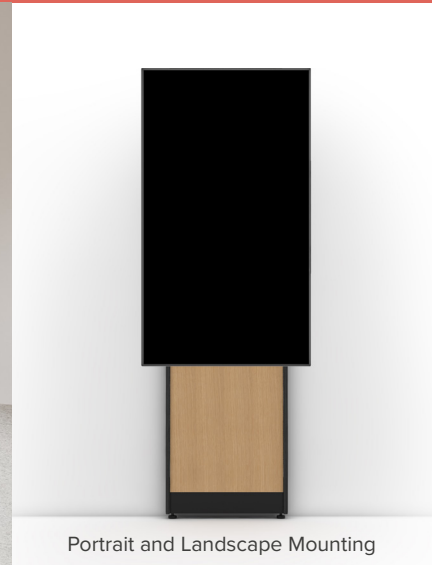


Strut 170

Wall Stand

Shown with optional ADA Rail and Camera mount.

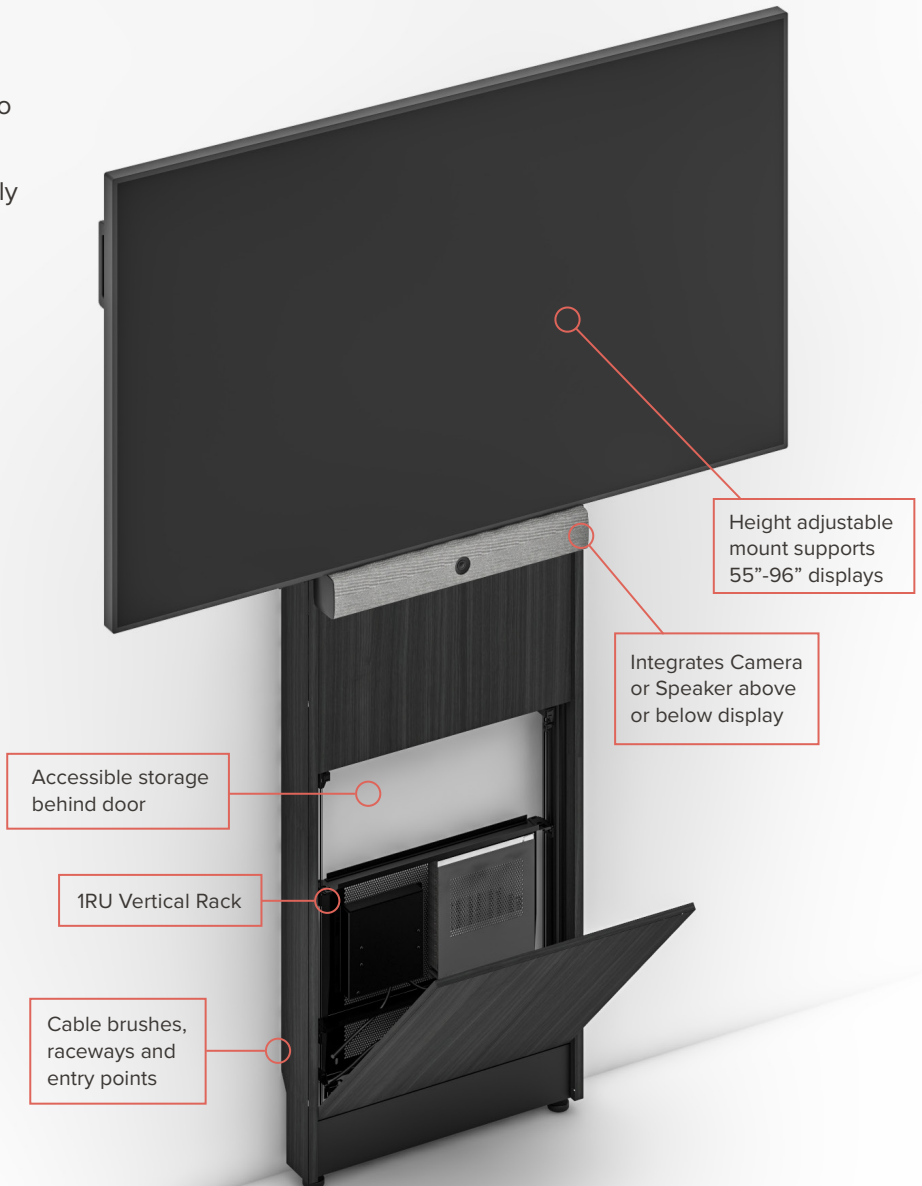
Display and peripheral equipment are shown for position only and are not sold by Salamander Designs.



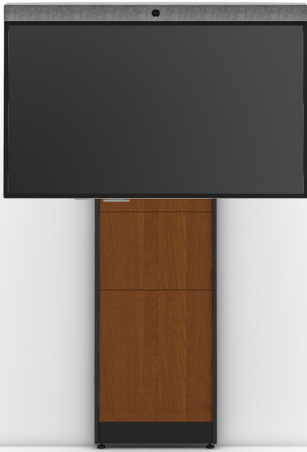
Portrait and Landscape Mounting

The Strut Wall Stand is a sleek, streamlined solution for supporting AV/IT technology. Featuring ultra-low-impact installation with no wall construction or down time, the modular design supports video displays while securely concealing small electronics, computers and cables. Ultra-simple installation allows the Strut 170 Wall Stand to be affixed to any wall without special preparation and is ideal for every application from entryway and retail digital signage, to training, video conferencing and beyond.

- **Rapid Global Deployment**
AV solutions that save time and money
- **Low Impact Installation**
No wall reinforcement required, no trades, no down time
- **Designer Choices**
Fronts in a white laminate and several real-wood veneers, with a black trim.
- **Future Proof Design**
Upgradeable and retro-fit friendly for new technology or new decor
- **Durability and safety tested**



Single Bay, Fixed Height Single Display



STR170/FH1/AC/BK
American Cherry



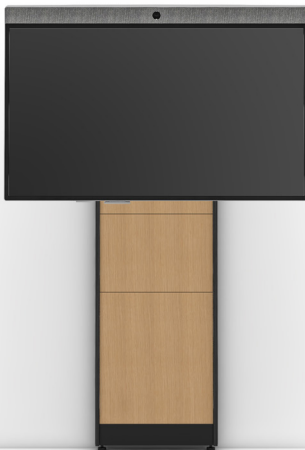
STR170/FH1/BO/BK
Black Oak



STR170/FH1/GW/BK
Gray Walnut



STR170/FH1/MW/BK
Medium Walnut



STR170/FH1/NO/BK
Natural Oak



STR170/FH1/WG/BK
Wenge



STR170/FH1/WH/BK
White



Manufactured in a
100% solar powered
USA facility



Uniquely
quick-shipped
within days



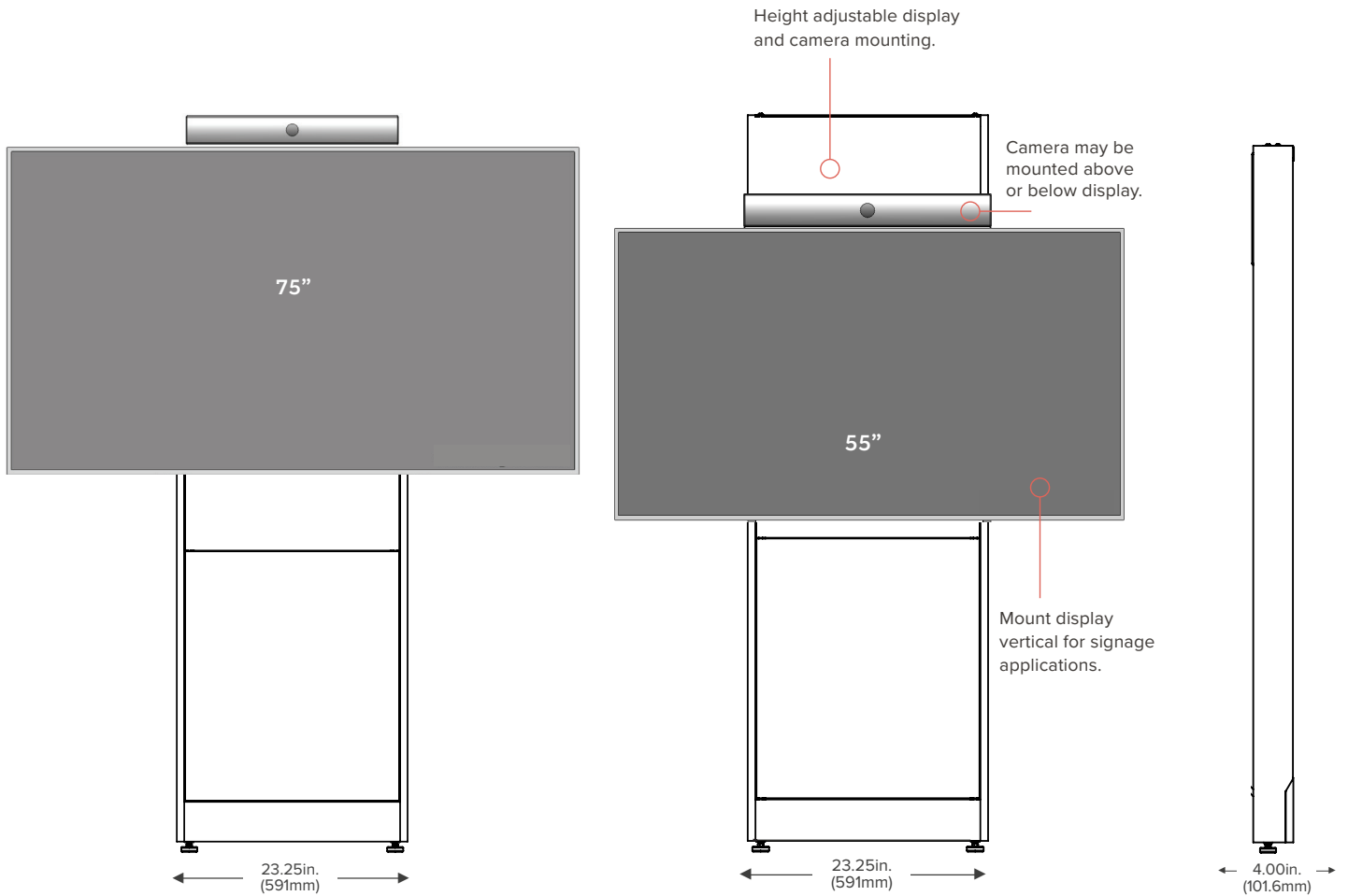
Backed by superior
service & lifetime
warranty

Display Mount

- Holds 55-98", 225 lbs (102kg)
- VESA Compliant: 600x400
- Adjustable Center Line of Screen: 54-68"
- Optional Mounting Extension Kit (CA/MAC8) provides additional 4" of vertical adjustment to display position and expands VESA to 600x600.
- CA/MAC8 mounting adapter and CA/MAC5 spacer adapters are required when mounting 85" Microsoft Surface Hub 2S.

Storage Compartment

- Includes Rack rail for 1RU Component storage
- Additional 1 RU rack brackets available (SA/RM1U)



Tech Shelf

- Custom sized shelf for camera, speaker or controller
- Fully adjustable height
- Mounts above or below video display
- Maximum Weight Capacity of 10 lbs (2 kgs)



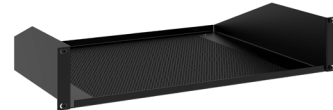
Tech Bracket

- Fully adjustable height
- Mounts above or below video display
- Accommodates most video/audio conference systems
- Universal mounting plate pattern: 0-16" (0-410mm)
- Max weight capacity of 25 lbs (11 kgs)



1 RU Vented Shelf

- 19" EIA standard rack mount, 14" deep, vented shelf, mounts to provided 1RU rack rails
- Allows cable tie or Velcro strap mounting of peripherals to the vented shelf
- Black powder coated steel



Mounting Adapters

- CA/MAC8 - Provides additional 4" of vertical adjustment to display position and expands VESA to 600x600
- 85" Microsoft Surface Hub 2S requires both CA/MAC8 and CA/MAC5 adapters

ADA Rail System One

ADA compliant detectable barrier that solves protrusion issues caused by wall mounted video displays. Modular system designed for displays 55-86" with durable, long lasting, brushed stainless steel finish. Easy to install to wall, no floor drilling required.

	ADA Rail System One	Compatibility
AR1/48/SS	48" Front Rail	Single Displays; 43", 49", 55"
AR1/60/SS	60" Front Rail	Single Displays; 65", 75"
AR1/72/SS	72" Front Rail	Single Displays; 85", 86"

